



Cubitt Building, 10 Gatliff Road
London SW1W

GARTON JONES.COM



Cubitt Building, 10 Gatliff Road London, SW1W

£725 Per Week

GARTON JONES.COM

8 Gatliff Road
Grosvenor
Waterside
Chelsea
London
SW1W 8DP

Sales +44 (0) 20 7730 5007
gws@gartonjones.com
www.gartonjones.com

A ONE DOUBLE BEDROOM apartment of approx. 549 sq.ft (50.97 sq.m) in Cubitt Building, Grosvenor Waterside. This furnished apartment benefits from an open plan reception room with integrated kitchen and floor to ceiling windows, wood flooring and a utility cupboard housing washing machine and built-in wardrobe to the bedroom. 24 HOUR CONCIERGE, GYM & SPA. Grosvenor Waterside is a popular residential development based in Chelsea and surrounds the historic Grosvenor Dock and is opposite Chelsea Barracks development. On-site Sainsbury's Local, coffee shop and private kids' club. SLOANE SQUARE & VICTORIA station with Gatwick Express are within walking distance. Battersea Park and Battersea Power Station development is also just a short stroll across Chelsea Bridge.

- 549 Sq.ft (50.97 Sq.m)
- 1 Double Bedroom
- Open Plan Reception
- Kitchen With Integrated Appliances
- Bathroom
- 24 Hour Concierge Service
- On-Site Sainsburys, Coffee Shop, Crèche & Purple Dragon Private Kids Club
- Moments From Sloane Square & Victoria Transport Links, Battersea Park & Local Amenities
- Secure Development Surrounding The Historic Grosvenor Dock

Available via Garton Jones' on-site office at Grosvenor Waterside (underneath Bramah House).

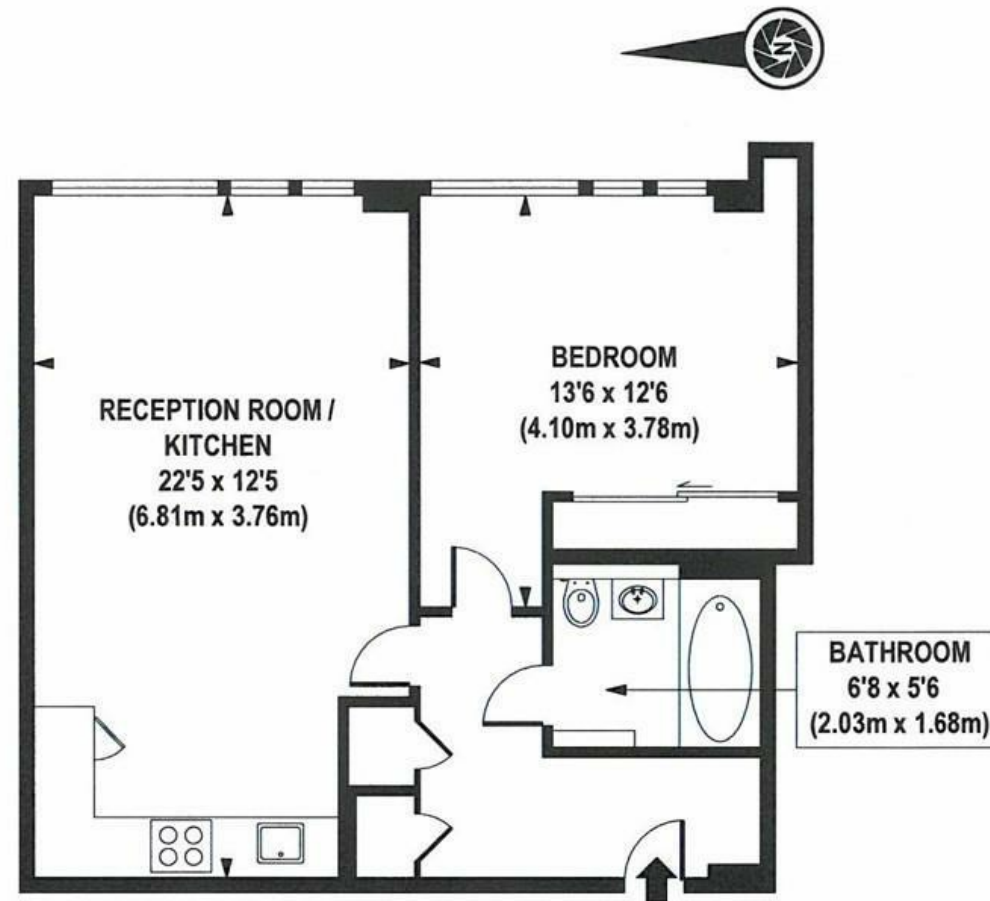
Council Tax band: Westminster City Council (band E).

12 month minimum term. 5 week deposit required.

EPC Rating: C

EPC certificate available on request.





APPROX. GROSS INTERNAL FLOOR AREA 549 sq. ft / 50.97 sq. m

